

About Us

Our innovation is based on the continuous renewal of products and processes, creative system solutions for the customer and the broad potential of LED lighting technology. Innovations determine our business success, and provide answers to many challenges of our time. In LED lighting technology, we are constantly seeking further solutions that save resources and protect our natural foundations of life at the same time. It is always our goal to make the everyday life of the individual and social life easier, safer and more comfortable and to contribute to a better world for present and future generations.

Special Features

- Solar powered- no need for Any other power supply source or electrical cabling.
- Remote Monitoring system & other customized solution (GSM/Hybrid/Bluetooth)
- Based on latest LED Technology
- Automatic Dusk to Dawn
- Solar High Mast system
- Maintenance free Batteries





UV Power

OUR VISION



The Sun, a boundless source of green energy, fuels our mission to illuminate the Earth with environmentally friendly LEDs. Harnessing infinite green energy, LEDs are a shining example, saving 90% of energy compared to traditional light bulbs and boasting a lifespan 30 times longer.

For the past 13 years, we've delved deep into the Indian market, understanding consumer preferences and analyzing local weather conditions to optimize energy production with efficiency and cost-effectiveness in mind. With a dedicated team of scientists and engineers, we provide tailor-made solutions to meet our customers' diverse needs. Our specialist team ensures top-notch service, maintenance, and swift support."



Certified



*“Your Needs,
Our Creations”*

All in one Solar Street Light

Features

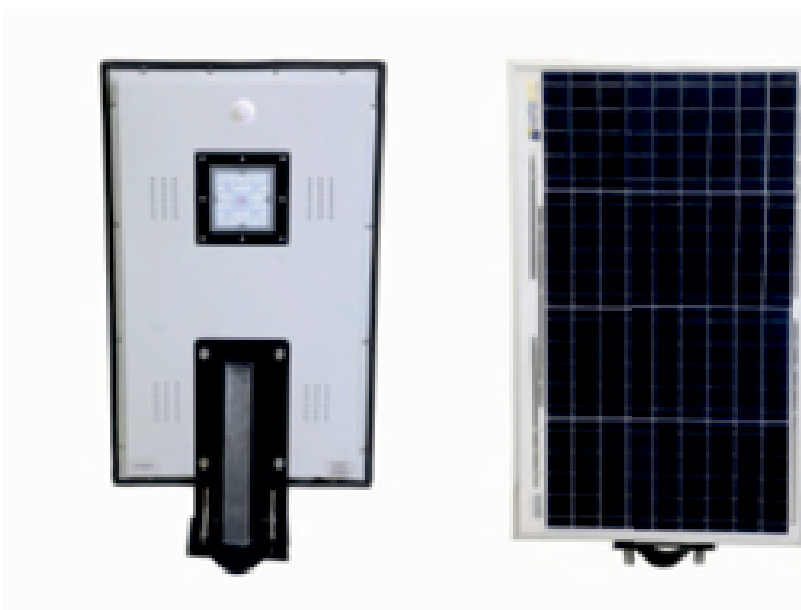
Eternity All in one Solar Street Light is made in INDIA with high efficiency Solar PV modules, longer life Lithium batteries, high efficacy led, smart in-built Passive Infrared (PIR) motion sensor that modify lighting according to human presence, it is controlled the dimming and brightness of light, if there is no motion for more than 30 seconds, the controller reduces brightness to 50%, on detecting any movement in the range of 12 meters, the light will automatically glow at full power, which increases the backup time.

We have wide range: 15W-100W

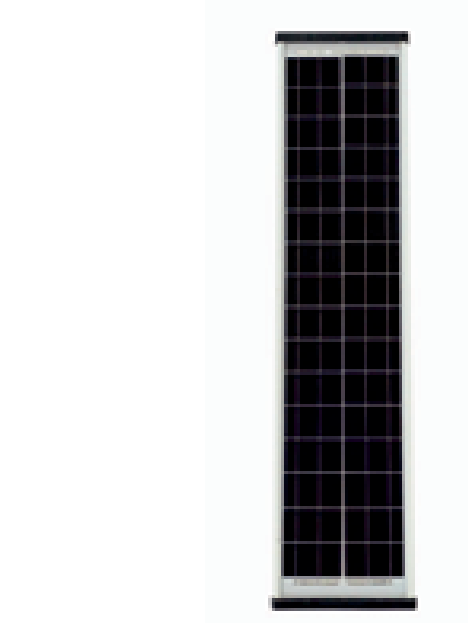


Product Code	LED Wattage	PV module	Battery	Lum. Flux	Dimension(mm)
ETSSL-AIO-15-PRM-A	15watt	33watt	12.8V 12ah LiFePo4	2250 lumen	530 x 400 x 42
ETSSL-AIO-18-PRM-A	18watt	45watt	12.8V 12ah LiFePo4	2700 lumen	740 x 400 x 42
ETSSL-AIO-24-PRM-A	24watt	45watt	12.8V 18ah LiFePo4	3600 lumen	740 x 400 x 42
ETSSL-AIO-30-PRM-A	30watt	60watt	12.8V 18ah LiFePo4	4500 lumen	905 x 400 x 42
ETSSL-AIO-40-PRM-A	40watt	75watt	12.8V 24ah LiFePo4	6000 lumen	1165 x 400 x 42
ETSSL-AIO-50-PRM-A	50watt	100watt	12.8V 30ah LiFePo4	7500 lumen	1350 x 400 x 42
ETSSL-AIO-60-PRM-A	60watt	120watt	12.8V 42ah LiFePo4	9000 lumen	1170 x 675 x 42
ETSSL-AIO-80-PRM-A	80watt	150watt	12.8V 60ah LiFePo4	12000 lumen	1250 x 710 x 42
ETSSL-AIO-100-PRM-A	100watt	150watt	12.8V 66ah LiFePo4	15000 lumen	1250 x 710 x 42

Economic All In One Solar Street Light



PRODUCT CODE	LED WATTAGE	PV MODULE	BATTERY	LUM. FLUX	DIMENSIONS(mm)
ETSSL-AIO-20-ECO-A	20watt	40watt	12.8V 12ah LiFePo4	2600 lumen	665 x 415 x 120
ETSSL-AIO-30-ECO-A	30watt	50watt	12.8V 18ah LiFePo4	3900 lumen	665 x 505 x 120
ETSSL-AIO-40-ECO-A	40watt	60watt	12.8V 24ah LiFePo4	5200 lumen	665 x 765 x 120
ETSSL-AIO-50-ECO-A	50watt	80watt	12.8V 30ah LiFePo4	6000 lumen	1350 x 350x 120



PRODUCT CODE	LED WATTAGE	PV MODULE	BATTERY	LUM. FLUX	DIMENSIONS(mm)
ETSSL-AIO-10-ECO-E	10watt	15watt	7.4V 5.2ah LiFePo4	1300 lumen	400 x 200 x 155
ETSSL-AIO-15-ECO-E	15watt	25watt	12.8V 6ah LiFePo4	1950 lumen	800 x 200 x 155
ETSSL-AIO-20-ECO-E	20watt	25watt	12.8V 12ah LiFePo4	2600 lumen	800 x 200 x 155

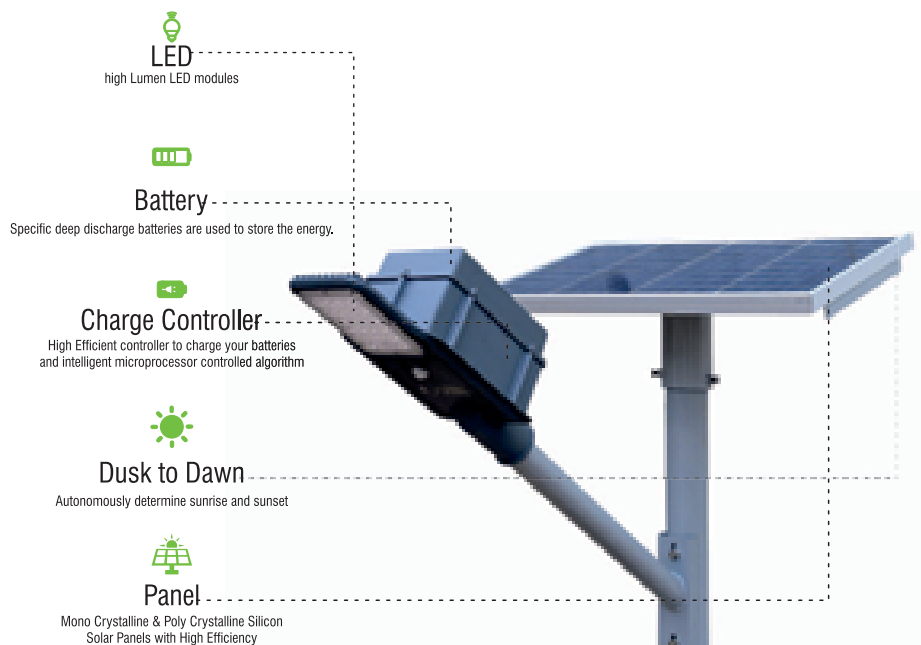


UV Power

Semi Integrated Solar Street light

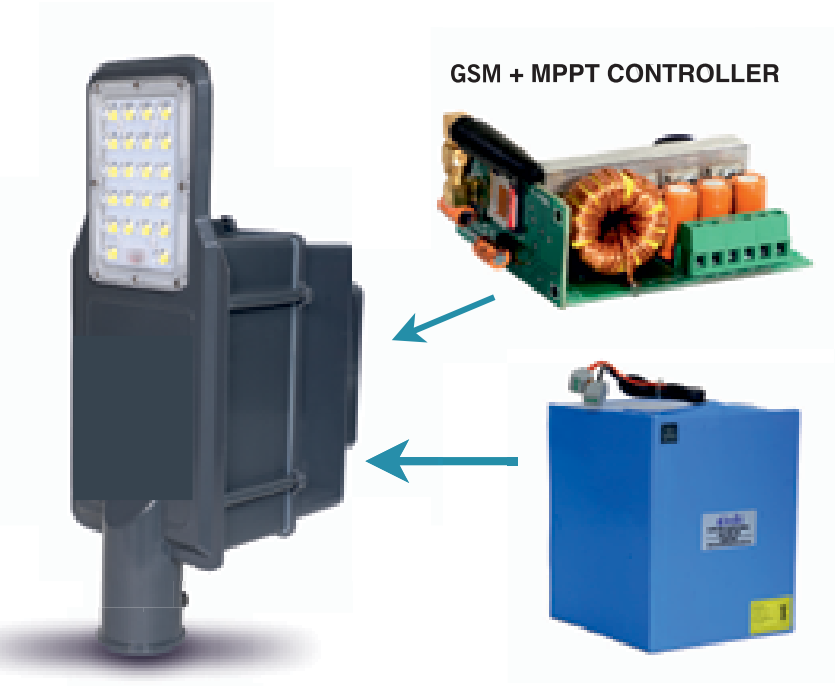
Features

In integrated solar street-lights we installed LED luminary separately and therefore we may install PV module with proper solar direction and tilt angle. By locating directly on the light fixture and placing the battery within the risk of damage, theft or tampering is greatly reduced. PIR motion sensor or intelligent dimming based on battery state of charge. We are offering our range as per MNRE guidelines as well We have a wide range: 10W-60W



Product Code	LED Wattage	Suggested PV Module	Battery	Lum. Flux	Dimension(mm)
ETSSL-INT-10-PRM-A	10watt	30watt	12.8V 6Ah LiFePo4	1400 lumen	325 x 160 x 90
ETSSL-INT-12-PRM-A	12watt	40watt	12.8V 12Ah LiFePo4	1680 lumen	325 x 160 x 90
ETSSL-INT-15-PRM-A	15watt	50watt	12.8V 12Ah LiFePo4	2100 lumen	325 x 160 x 90
ETSSL-INT-18-PRM-A	18watt	60watt	12.8V 18Ah LiFePo4	2520 lumen	430 x 170 x 120
ETSSL-INT-24-PRM-A	24watt	75watt	12.8V 18Ah LiFePo4	3360 lumen	430 x 170 x 120
ETSSL-INT-30-PRM-A	30watt	100watt	12.8V 24Ah LiFePo4	4200 lumen	430 x 170 x 120
ETSSL-INT-36-PRM-A	36watt	120watt	12.8V 30Ah LiFePo4	5040 lumen	430 x 170 x 120
ETSSL-INT-40-PRM-A	40watt	120watt	12.8V 36Ah LiFePo4	5600 lumen	430 x 170 x 120
ETSSL-INT-45-PRM-A	45watt	165watt	12.8V 42Ah LiFePo4	6300 lumen	430 x 170 x 200
ETSSL-INT-50-PRM-A	50watt	165watt	12.8V 48Ah LiFePo4	7000 lumen	430 x 170 x 200
ETSSL-INT-60-PRM-A	60watt	165watt	12.8V 54Ah LiFePo4	8400 lumen	430 x 170 x 200

Solar Led Street Light based on RMS System



Remote monitoring facility will be integrated with MPPT charge controller and it would record system parameters at fixed time interval of 10 minutes for system health analysis. Recorded data can be downloaded in PDF, XLS, JPEG, PNG and SVG format. Recorded data will be available online for 30 days of limited time.

Remote Monitoring URL: <https://solarlights.rmstracker.com>

Username: 201018001

Password: test123

Login Page Credentials:

- 1) Username: Device Serial No.
- 2) Password: It will be available along with the product.

RMS PARAMETER	DESCRIPTIONS
Battery Parameter	Battery : Voltage / Current / Power
Solar PV Parameter	Solar PV : Voltage / Current / Power
Load Parameter	Load : Status / Voltage / Current / Power
Fault Detection	Fault Description
Site Co-Ordinates	Map with Latitude and Longitude

Stand-alone Solar CCTV Camera

Features

- ✔ IR Bullet 3 Megapixel.
- ✔ Built-in high-sensitivity MIC & speaker, support two-way audio.
- ✔ Intelligent humanoid detection, greatly reduce the interference of branches, small area movement detection, real-time push information. - IP66 waterproof rating.
- ✔ Support remote monitoring by mobile phone and PC client, view the live situation anytime and anywhere.
- ✔ Active defence, when someone breaks into the alert area, the device will alarm by sound and push alarm information



Model Name	ETSOL-CCTV-PRM-A
Camera Type	Wireless 4G Inbuilt Storage 3MP IP Camera
Solar PV Module	30WP Poly-Crystalline
Solar Panel MPP Voltage	19 Volt
Battery type and Capacity	12.8v 154Wh LiFePO4
Battery backup / Autonomy	> 48Hours
Charge Controller Methodology	Three Stage battery charge monitoring algorithm
Ideal Current Consumption	Less than 2 ma
PWM Frequency	Charge Controller : 25 Hz
Mounting Type	Wall / Pole Mounting with accessories
Image Sensor	CMOS Sensor
Resolution	2304 x 1296
S/N Ratio	> 39.1 dB
Lens	3.6MM (M 12 mount)
Night Vision capabilities	Ultra bright 36nos IR LEDs
Light Mode	Full Colour / Infrared / Intelligent
Image Settings	Standard / Bright / Gorgeous
Features	Best Quality Video ,Motion detection, alarm Information push, support mobile phone, client remote monitoring by app
TF/SD card	Support Max. 128 GB
Connection mode	4G / RJ45 LAN network connection
Product Warranty	36 Months

Solar Charge Controller

MPPT and PWM Charge Controllers

- Supported batteries: Lead acid, Li-Ion NMC, LiFePO4
- Input voltage: 12V / 24V
- More than 95% charging efficiency
- Three stage battery charge monitoring algorithm
- GPRS cloud based remote monitoring system
- Bluetooth / wifi based mobile application
- Hybrid functionality

Protections

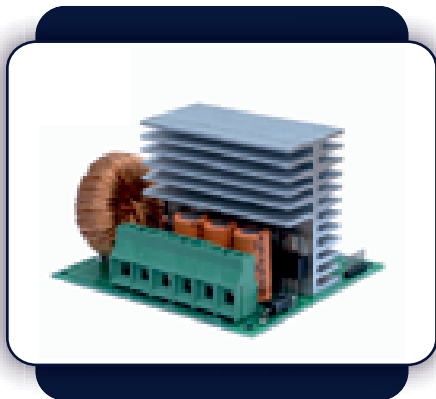
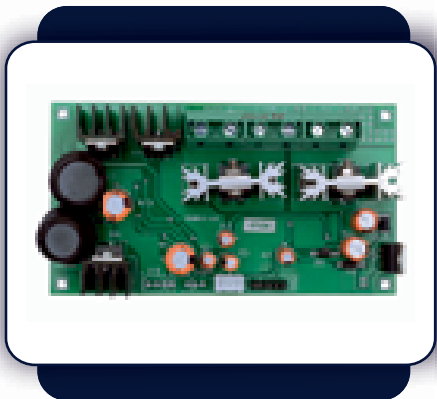
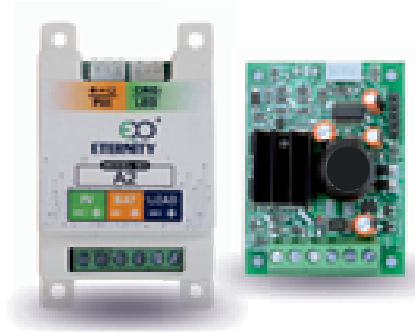
- Short circuit protection
- Battery over charge protection
- Battery deep discharge protection
- PV reverse voltage polarity protection
- Battery reverse voltage polarity protection

Solar Charge Controller

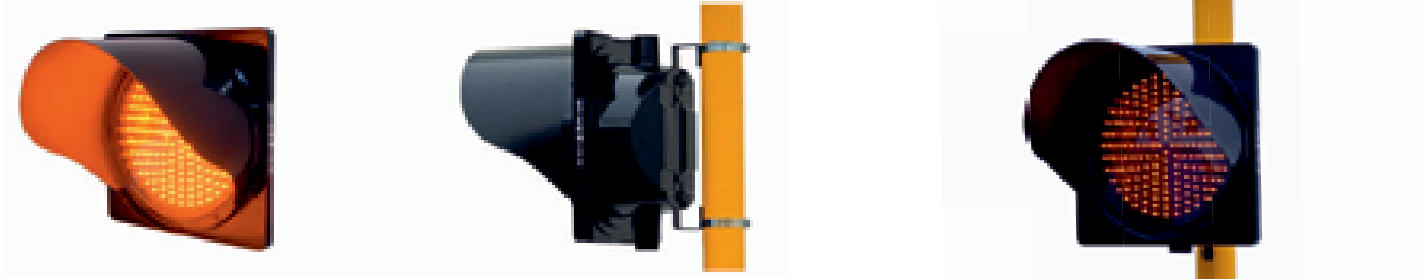
- Constant voltage load output
- 6amp to 30amp wide range
- Mobile charging USB port
- Load shutdown switch
- Multiple load output

Solar LED Street-Light Controller

- Constant current load output
- Solar charge controller + LED driver for solar LED street-light
- 5watt to 100watt wide range
- More than 92% LED driver efficiency
- Multi stage customised dimming functionality
- As per MNRE specifications



Solar LED Traffic Blinker



PARAMETER	DESCRIPTION
Aspect diameter	300mm
Display color	Red / Amber / Green
Working hour	12 hours(dusk to dawn) / 24 hours
Body	Polycarbonate(Suitable for extreme weather condition)
Number of LEDs used	180 nos high brightness LEDs
LED wavelength	Red: 620±5 nm, Amber: 590±5 nm, Green: 500±5 nm
Input Voltage	12.8VDC / 230VAC
Frequency	40 Flashes per minute
Solar PV module	20watt
Battery	12.8V 6ah LiFePO4 battery pack
Power consumption	4 watt max.
LED viewing angle	23 degree (as per NHA1 standard)
Lamp intensity(Centre Lux)	Greater than 330 cd (as per NHA1 standard)
IP protection	IP65 (as per NHA1 standard)
Visibility	Greater than 500 meters
Autonomy	4 days
Charge controller methodology	Three stage battery charge monitoring algorithm
LED driver efficiency	Greater than 90 percent
LED driver methodology	Dual PWM dc-dc buck converter
Ideal current consumption	Less than 10 ma
Protection	<input type="checkbox"/> Short circuit protection <input type="checkbox"/> Battery over charge protection <input type="checkbox"/> Battery Deep discharge protection <input type="checkbox"/> PV reverse voltage polarity protection <input type="checkbox"/> Battery reverse voltage polarity protection <input type="checkbox"/> Software watch-dog for LED over current
Pole specs	12feet MS/GI 76mm outer dia yellow powder coated pole
System Weight	

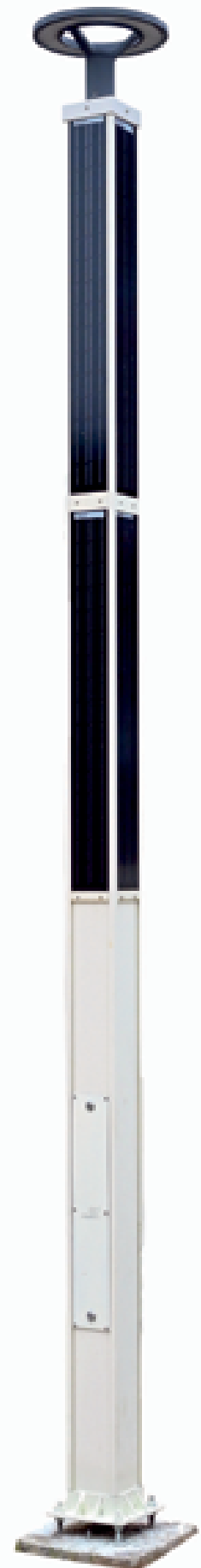


UV Power

Solar Post-Top Pole Light

This manual contains important instructions for the installation and maintenance of the Solar Led Post Top Pole Light. The ETERNITY's Solar Led Post Top Pole Light System is a Standalone, off-grid, solar-powered lighting system. Years of engineering, development, and testing ensure that this system meets or exceeds all performance and reliability specifications. Every system that leaves our factory has been quality control tested and inspected to assure you of an easy installation and highly dependable performance. All mechanical Fittings and electrical connections are designed for simple and reliable Installation. The system is ready for use Immediately after the components are mounted and the plug and play connectors are joined.

PARAMETER	DESCRIPTION
Casting + Materials LED Fitting	PDC+ADC 12
Diffuser	Clear Diamong cut PC
Wattage	30W
Lumen Output	> 3500 Lumens
Colour Temprature	2500K / 4000K / 6500K
Solar PV Module	180WP High Efficiency Mono Crystalline
Solar Module Size	1100 x 133 mm
VOC of Solar Module	17V
Type of Battery	BIS approved cell 12.8v 36ah LiFePO4
Battery location	Inside the Pole
Backup	24 Hours with Dimming
Solar Charge Controller Type & Capacity	MPPT CCU & 12.8v 15Amp
Dusk To Dawn	Yes
Protections	Short circuit protection
	Battery over charge protection
	Battery deep discharge protection
	PV reverse voltage polarity protection
	Battery reverse voltage polarity protection
Height Up to the Fixture Top	12 Feet
Materials of Pole	Extruded Aluminium
Paint	Powder Coated
Base Plate	250 x 250 x 8 mm



Solar Stand Alone High Mast Light



PRODUCT CODE	LED WATTAGE	SUGGESTED PV MODULE	SUGGESTED BATTERY	LUM. FLUX	DIMENSIONS(mm)
ETSFL-SALN-24-PRM-A	24watt	75watt	12.8V 24Ah LiFePo4	3600 lumen	230 x 200 x 50
ETSFL-SALN-30-PRM-A	30watt	100watt	12.8V 30Ah LiFePo4	4500 lumen	230 x 200 x 50
ETSFL-SALN-50-PRM-A	50watt	165watt	12.8V 54Ah LiFePo4	7500 lumen	300 x 240 x 50
ETSFL-SALN-70-PRM-A	70watt	200watt	25.6V 36Ah LiFePo4	10500 lumen	300 x 240 x 50
ETSFL-SALN-100-PRM-A	100watt	330watt	25.6V 48Ah LiFePo4	15000 lumen	360 x 300 x 70
ETSSL-SALN-50-PRM-A	50watt	165watt	12.8V 54Ah LiFePo4	7500 lumen	330 x 140 x 95
ETSSL-SALN-70-PRM-A	70watt	200watt	25.6V 36Ah LiFePo4	10500lumen	400 x 190 x105
ETSSL-SALN-100-PRM-A	100watt	330watt	25.6V 48Ah LiFePo4	15000 lumen	400 x 190 x 105

Solar Integrated High Mast Light



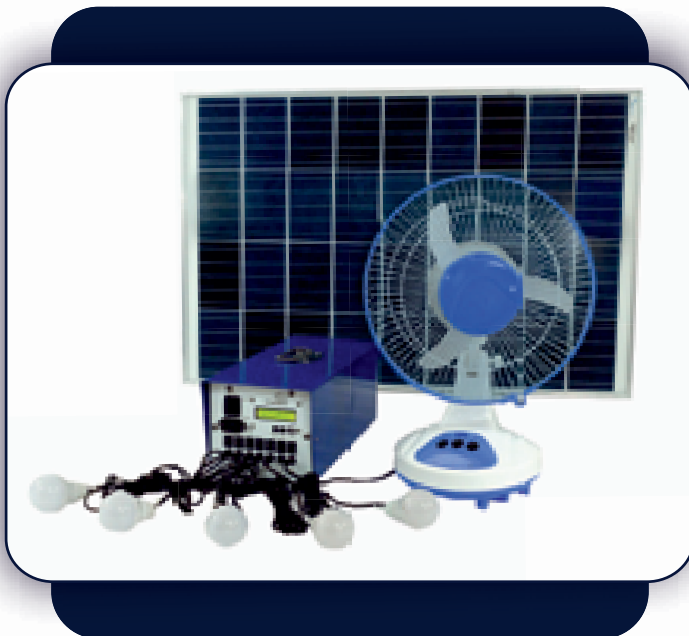
PRODUCT CODE	LED WATTAGE	SUGGESTED PV MODULE	IN BUILT BATTERY	LUM. FLUX	DIMENSIONS(mm)
ETSFL-INT-15-PRM-A	15watt	50watt	12.8V 12Ah LiFePo4	2250 lumen	300 x 250 x 250
ETSFL-INT-24-PRM-A	24watt	75watt	12.8V 18Ah LiFePo4	3600 lumen	300 x 250 x 250
ETSFL-INT-30-PRM-A	30watt	80watt	12.8V 24Ah LiFePo4	4500 lumen	300 x 250 x 250
ETSFL-INT-36-PRM-A	36watt	100watt	12.8V 30Ah LiFePo4	5400 lumen	300 x 250 x 250
ETSFL-INT-45-PRM-A	45watt	120watt	12.8V 42Ah LiFePo4	6750 lumen	300 x 250 x 250
ETSFL-INT-50-PRM-A	50watt	165watt	12.8V 48Ah LiFePo4	7500 lumen	300 x 250 x 250
ETSFL-INT-60-PRM-A	60watt	200watt	12.8V 54Ah LiFePo4	9000 lumen	300 x 250 x 250

Solar Home Light System

A Solar home light system provides a comfortable level of illumination in one or more rooms of a house.

Features:

- Portable and Aesthetic design
- Easy to install
- Battery low Indicator
- Upgraded PWM Solar charge controller
- Longer Battery life ensured
- Fast mobile charging USB port
- Separate switch for each Light
- Free from noise, smoke & pollution
- Perfect for domestic and commercial use



Model 1

ETSHS-20-EA

- In-built 12.8V 6Ah LifePo4
- 20Watt Solar PV module
- 3W bulb 2pcs
- 5-6hours backup

Model 2

ETSHS-50-EA

- In-built 12.8V 12Ah LiFePo4
- 50Watt Solar PV module
- 3W bulb 1pcs, 4W bulb 2Pcs
- 15W DC Fan 1Pcs
- 8-10Hours backup

Model 3

ETSHS-75-EA

- In-built 12.8V 18Ah LiFePo4
- 75Watt Solar PV module
- 3W bulb 1Pcs, 4W bulb 1Pcs
- 7W bulb 1Pcs
- 15W DC Fan 1Pcs
- 8-10Hours backup

Model 4

ETSHS-100-EA

- In-built 12.8V 30Ah LiFePo4
- 100 Watt Solar PV module
- 3W bulb 1Pcs, 4W bulb 1Pcs
- 7W bulb 1Pcs
- 15W DC Fan 1Pcs
- 15-18 Hours backup

Model 5

ETSHS-330-EA

- In-built 12.8V 90ah LiFePO4
- 330watt PV module
- 7watt bulb 5 pcs
- 25watt BLDC ceiling fan 1 pcs
- TV socket 1 pcs
- With display

our Works

